



Hidrofleks

Hortum, Hidrolik ve Pnömatik

HYDROSAFE BARRIER EMERGENCY VEHICLE STOP SYSTEM

HYDROSAFE BARRIER EMERGENCY VEHICLE STOP SYSTEM

**As you know, 25% of all the industrial accidents happens
in loading zones.**

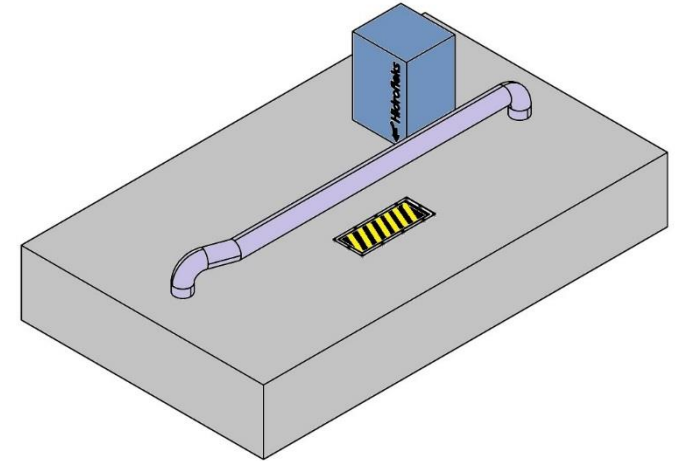
**HydroSafe Barrier is designed by Hidrofleks, to ensure security for
staff and potential pedestrians who may be between the oncoming
vehicle and the dock levellers on the loading docks.**

**HydroSafe Barrier provides safe and hassle-free loading zones by
giving you the needed speed and strength to stop the moving vehicles
in the loading areas in case of emergencies, which other products in
this sector can't provide...**

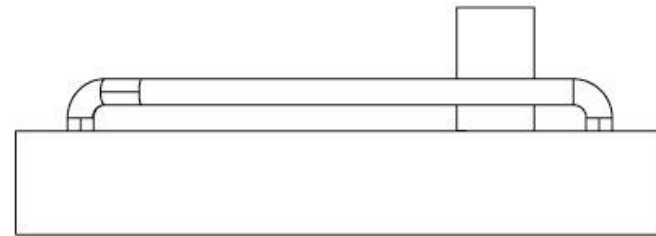
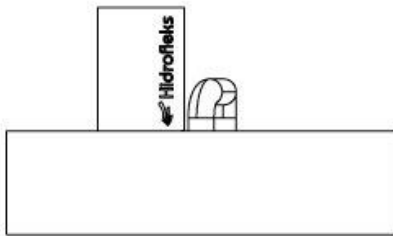
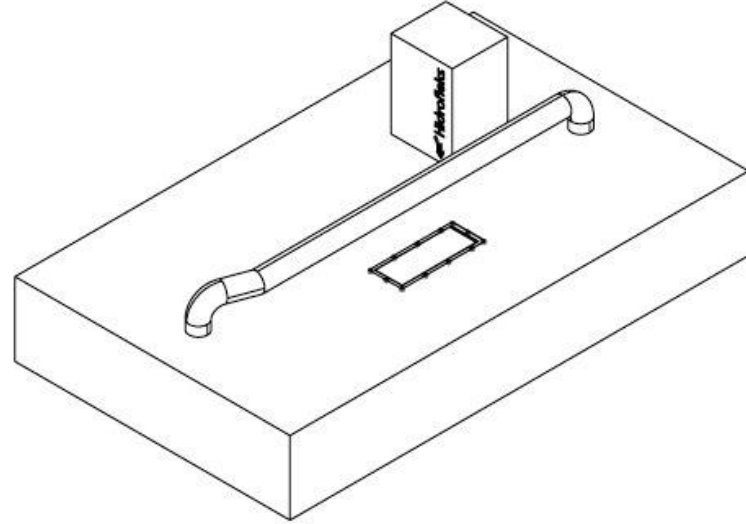
HYDROSAFE BARRIER

HydroSafe Barrier System Components;

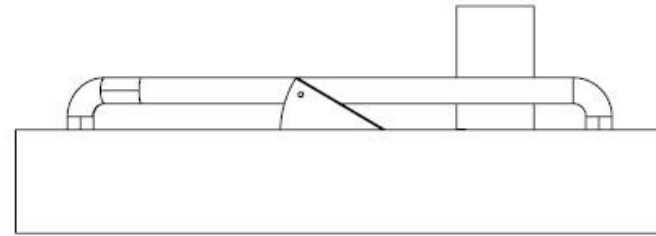
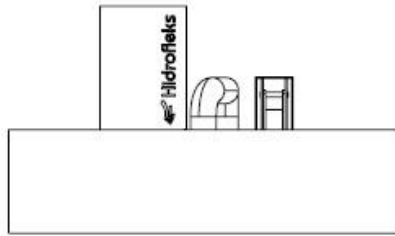
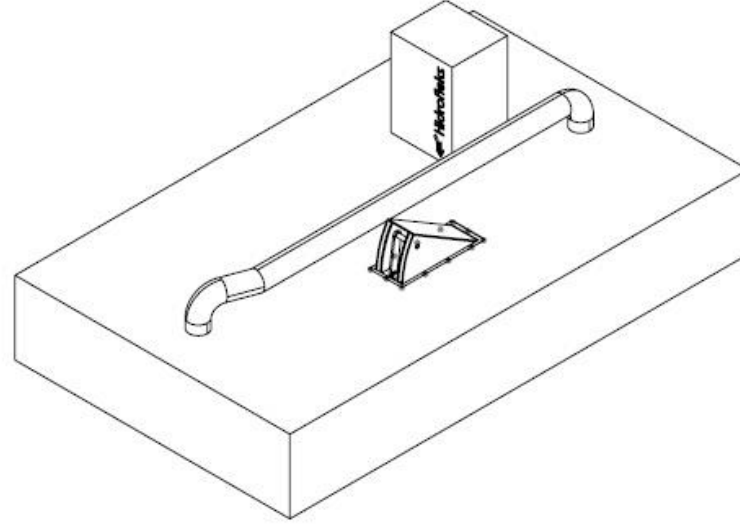
- ❖ Vehicle Entry Sensor,
- ❖ Security Mat,
- ❖ User Friendly Control Panel,
- ❖ 4.3" Touchscreen,
- ❖ Visual and Auditory Warning System,
- ❖ Battery Powered Power Supply and Hdraulic Accumulator to keep the system working during electricity cuts,
- ❖ Adjustable Response Time Among 0,7 Sn – 1,2 Sn,
- ❖ 11-12 Tons of Instantaneous Force & 4 Tons of Counter Pressure,
- ❖ Announcement and Display System for Routing and Communication, (Optional)
- ❖ Authorization System with E-Card, (Optional)
- ❖ Integrable with the Other Loading Systems,

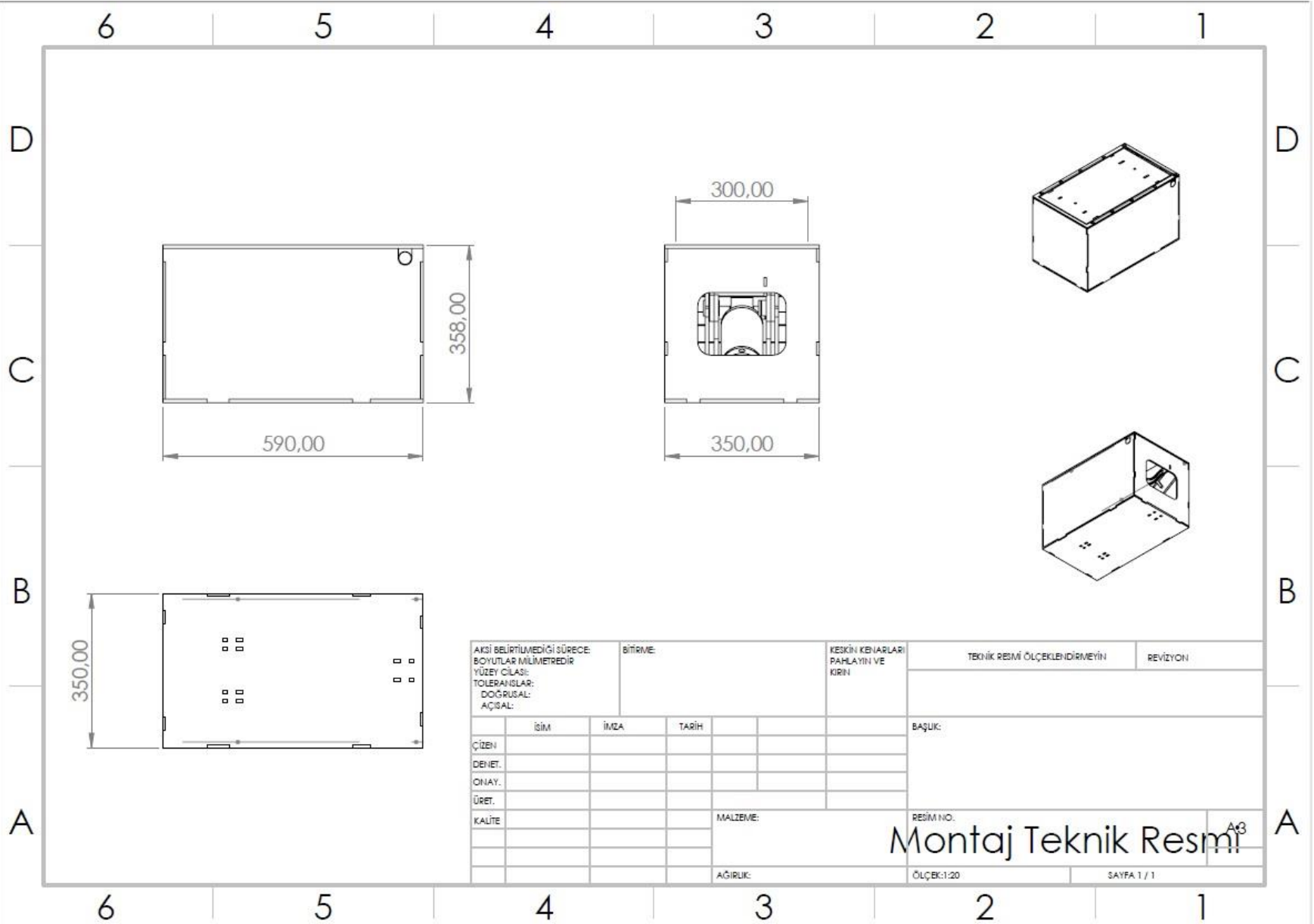


HydroSafe Barrier
Tır Durdurma Güvenlik Sistemi
CLOSED POSITION

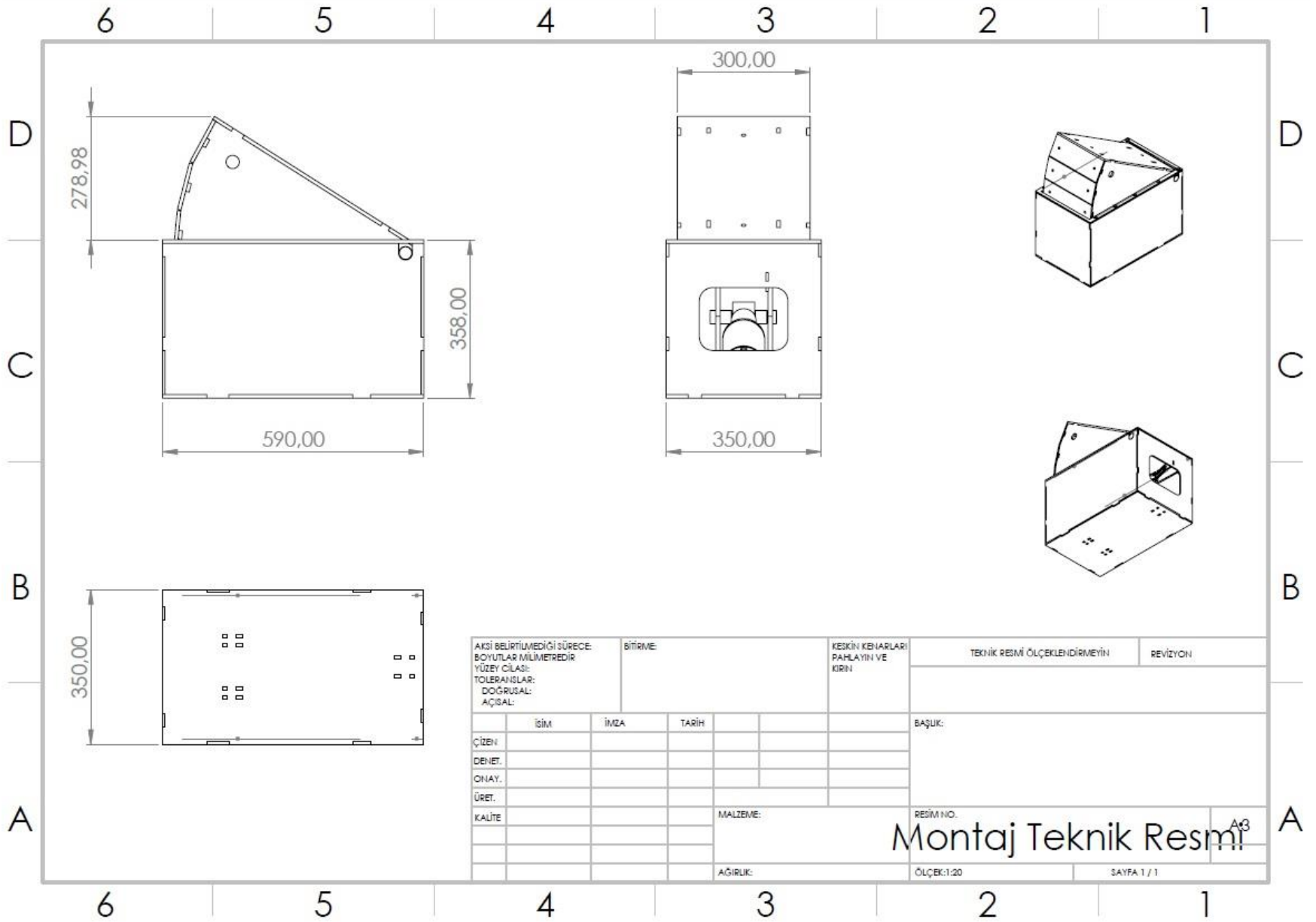


HydroSafe Barrier
Tır Durdurma Güvenlik Sistemi
OPEN POSITION



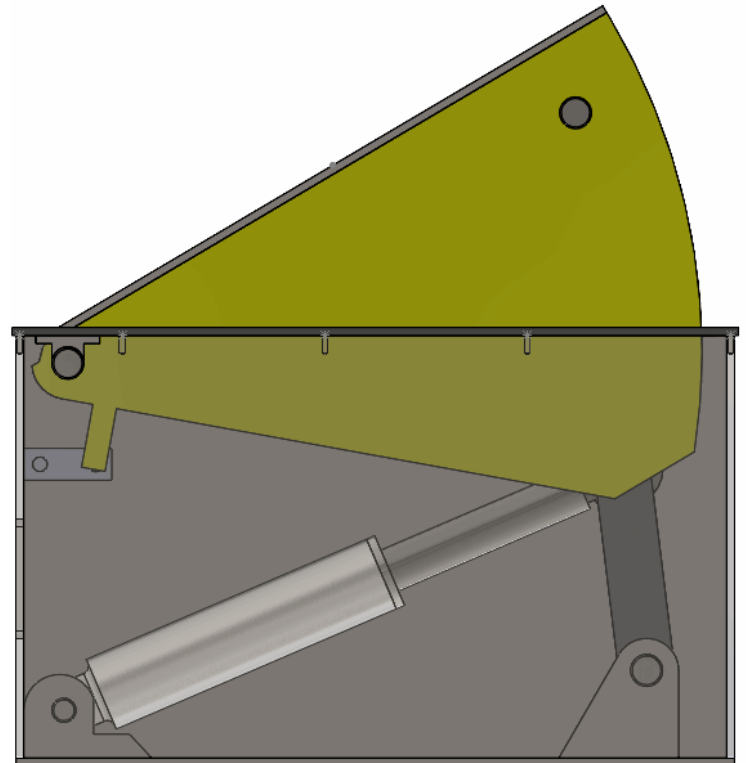
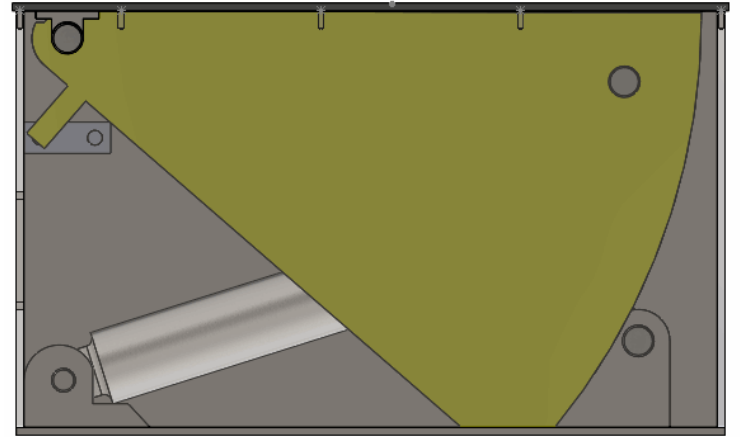
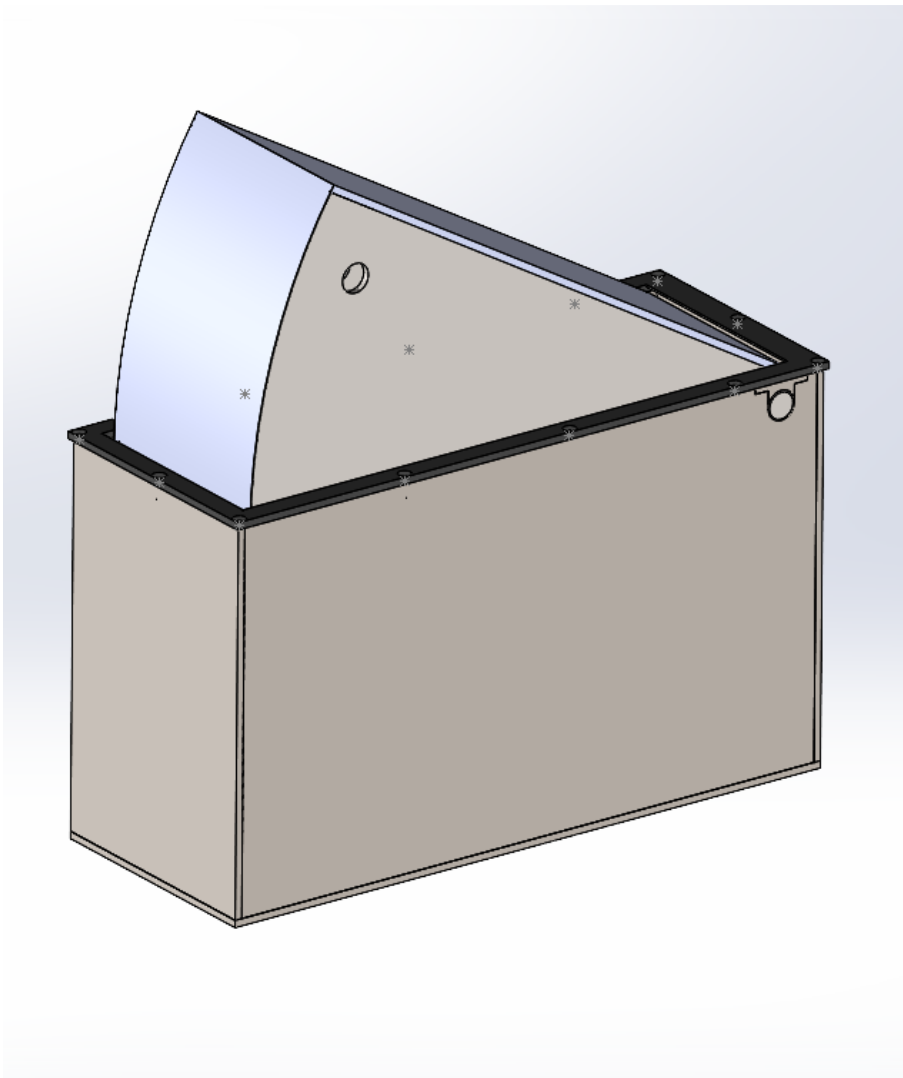


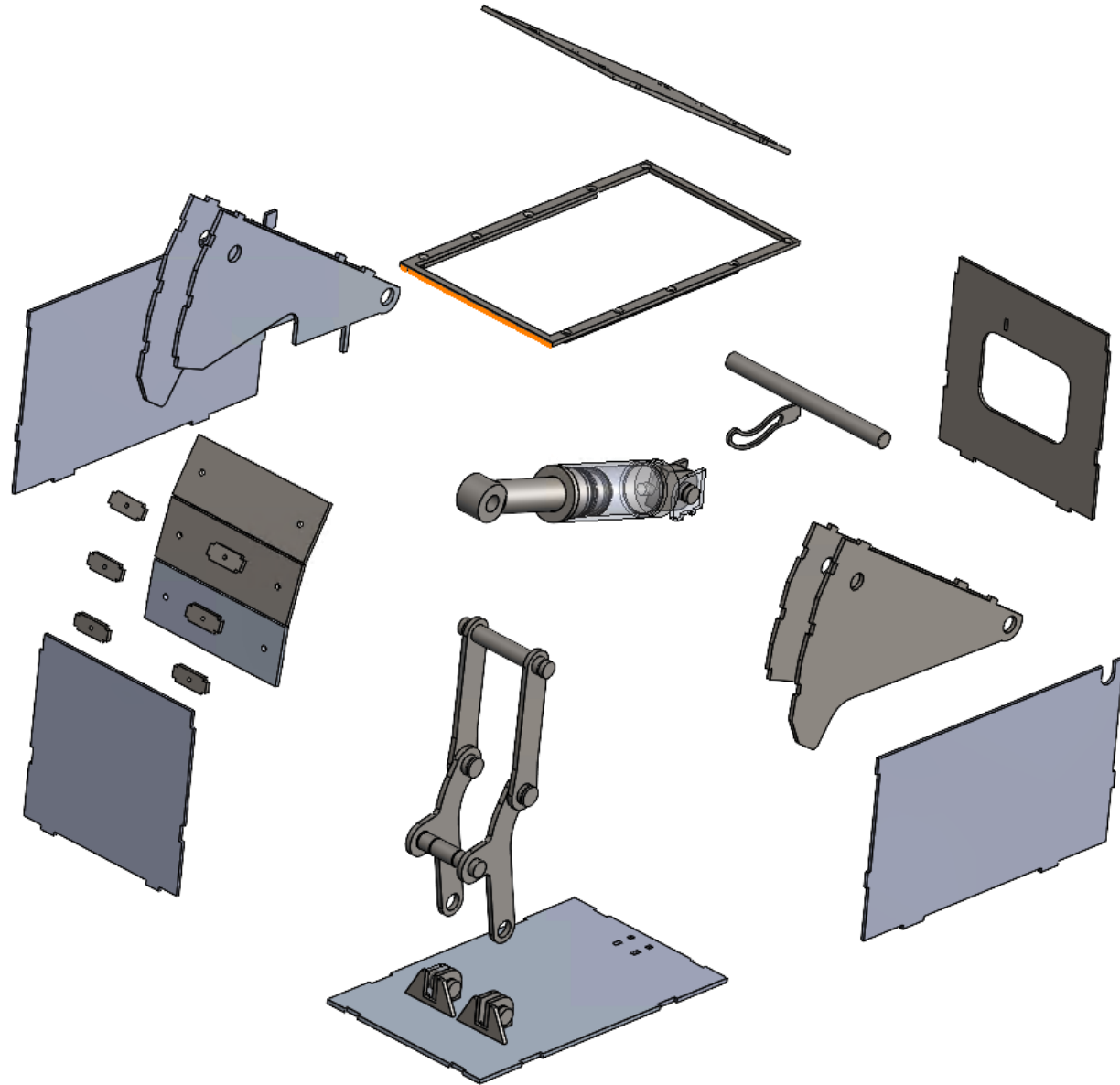
AKSI BELİRTİLMEDİĞİ SÜRECE BOYUTLAR MİLMETREDİR YÜZEY ÇILASI: TOLERANSLAR: DOĞRUSAL: AÇISAL:				BİTİRME:		KESKİN KEHARLARI PAHLAYIN VE KIRN		TEKNİK RESİM ÖLÇEKLENDİRMEYİN		REVİZYON	
ÇİZEN				İMZA		TARİH		BAŞLIK:			
DENET.											
ONAY.											
ÜRET.											
KALİTE						MALZEME:		RESİM NO:		A3	
								Montaj Teknik Resmi			
						AĞIRLIK:		ÖLÇEK:1:20		SAYFA 1 / 1	



AKSI BELİRTİLMEDİĞİ SÜRECE BOYUTLAR MİLMETREDİR		BİTİRME		KESKİN KENARLARI PAHLAYIN VE KIRIN		TEKNİK RESİM ÖLÇEKLENDİRMEYİN		REVİZYON	
YÜZEY ÇILASI:									
TOLERANSLAR:									
DOĞRUSAL:									
AÇISAL:									
		İSİM		İMZA		TARİH		BAŞLIK:	
ÇİZEN									
DENET.									
ONAY.									
ÜRET.									
KALİTE						MALZEME:		RESİM NO.	
								A3	
						AĞIRLIK:		ÖLÇEK:1:20	
								SAYFA 1 / 1	

Montaj Teknik Resmi





HYDROSAFE BARRIER SECURITY SYSTEM

System Components

: Vehicle Entry Sensor, User Friendly Control Panel, 4.3" Touchscreen, Lumionus and Voice Warning System, Security Mat, Battery Powered Power Supply to keep the system working during electricity cuts, Adjustable Response Time Among 0,7 Sn - 1,2 Sn, 11 Tone Quick Stop & 6 Tone Counter Pressure Power, Authorization System with E-Card,, Announcement and Display System for Routing and Communication, Integrable with the Other Loading Systems,

Operating and Measuring Values

Response Time	: Adjustable Among 0,7 Sn - 1,2 Sn
Pressure-Relief Valve	: 220 Bar
Total Length	: 590 mm
Total Width	: 350 mm
Closed Height	: 358 mm
Open Height	: 637 mm
Barrier Height	: 280 mm
Barrier Movement	: 400 mm
First Oppilation Pressure	: 220 Bar
First Oppilation Strength	: 108 kN (=11000 kg)
Hold-Down Pressure	: 120 Bar
Hold-Down Strength	: 60 Kn (=6000 kg)
Electrical Capacity	: 2.2 kW
Main Connections	: 3 x 400V, 50 Hz, 1xnil, 1xtoprak,
Main Current	: 3P 16A
Voltage	: 380 V
Supply	: 5x2,5
Sound Level	: 70 dB(A)